

NEWS FROM THE GLEN

Newsletter of Glen Allen

www.glenallen.org

Bowie, Maryland

Spring 2010

Spring Maintenance Inspections

Throughout past years, community members have complimented the appearance of the homes in our community. This is a result of the diligent efforts of a majority of our homeowners, and the Board commends you. However, this is a good time to review the process that ensures that our community maintains the design plans of Glen Allen.

The Board is authorized to review and enforce the design plans of our community by the Declarations of Covenants, Conditions and Restrictions in Article V, Architectural Control, Article VI, Covenant for Exterior Maintenance, Article VII, Use Restrictions, and applicable amendments. The Architectural Guidelines also support these articles.

By now, you should have received the 2010 spring inspection schedule, which follows the standards established in the Covenants. This process consists of the following:

- ProCom Management will conduct the inspection of all lots in our community. The inspectors will view the lots from the sidewalk, even though they are authorized to enter the lots. Any discrepancy observed will be noted on the inspection report. Please understand that, as a result of the viewing distance, the discrepancy may be incorrectly noted. If this is the case, please contact ProCom immediately so the discrepancy can be remedied.
- An inspection report is mailed to every homeowner, stating a successful inspection or what corrective action is required. A date is stated for the completion of corrections.
- A second inspection is performed to check for compliance. Additional steps are stated in the mailed schedule. After this inspection, the chairperson of the Architectural Review Committee rechecks the properties to verify the findings of this inspection.

(Continued on Page 2)

If you cannot correct the problem within the time frame, you may contact ProCom and request an extension from the Board. The Board wants to hear from you promptly in order to address any problems. This should remove the need to hold maintenance hearings and impose fines. After a correction is completed, a written notification should be mailed to ProCom.

The Board recognizes and compliments you on your efforts in keeping our community a beautiful one.

-- Charles Brown, Vice President HOA and Chair of the Architectural Review Committee

-o-

HOA Contacts

ProCom, Inc.

Sherry Jones: 301-261-0777

HOA Board of Directors

Karen DeFazio, President: 301-249-7463

Charles Brown, Vice President:
301-351-1396

Cary Hithon, Treasurer: 301-218-1956

Gary Goldberg, Secretary: 301-249-2271

Dorothy Morrison, At-Large:
301-390-2841

City Council Member, District 4

Isaac Trough: 301-249-0707

Committees and Chairs

Architectural Review, Charles Brown

Grounds and Maintenance, Joe Brust

Hospitality, Vacant

Neighborhood Watch, David Nixon

Newsletter, Karen and Bob DeFazio

Website: www.glenallen.org

Trees Over Bowie Update

The paving of the Intercounty Connector (ICC) is taking away acres of trees in Montgomery County. The state must have a certain number of acres of forests (or at least trees) and is looking for areas to plant to replace those taken away by the ICC. One of the places that they would like to plant trees is around the common area officially known as the Atlantis Drive Stormwater Management Pond (also known as the Wetlands and the Gulley). This is the area located at the intersection of Atlantis Drive and Arden Forest Lane. The area we use for Movie Night will not be affected.

Tiffany Wright of the City's Planning and Economic Development Office updated the Board on the plans at the meeting on March 9. They are planning to plant species that already exist in Glen Allen; 200 5' trees per acre and 20 root ball in burlap trees with 2 ½" trunks per acre. All trees will have deer protection (plastic netting at the base of the trees). They are also planning to have a wood-chip path through the trees. The Board reminded her that if the path is made of wood chips, the city must provide regular maintenance. Planting is still scheduled to begin in 2011.



Take a Moment and Look Around

As I walk our dog along the streets of Glen Allen, I can't help but notice how much litter is lying on our streets and sidewalks. Our community is known for well-kept homes and lawns. How can we allow our neighborhood to be tarnished by all sorts of trash along our streets? How much trouble would it be when you see a piece of litter to pick it up and dispose of it at home?

Yard Sale Coordinator Needed

For many years Glen Allen has had an annual community yard sale for which the Board provides the advertising in local newspapers and via banners at the entrances and the residents provide the sale. This has always been coordinated by the Hospitality Committee. Unfortunately, the Hospitality Committee is lacking a chairperson. As such we are uncertain whether you would like another yard sale this year. If you would, we also need a volunteer to coordinate it. This would entail deciding the date for the yard sale and putting up the signs/banners a week before the date and taking them down the day after the sale. The Board will again make sure that the event is listed in the local newspapers.

If you are interested in coordinating this event or even chairing the Hospitality Committee, please email Sherry Jones at ProCom (sjones@procomgt.com) or call her on 301-261-0777 x 100.

Crime Statistics for Glen Allen and Surrounding Area

Crimes	Jan.	Feb.	Mar.*
Homicide	0	0	0
Forcible Rape	0	0	0
Commercial Robbery	0	0	0
Residential Robbery	0	0	0
Citizen Robbery	1	0	0
Carjackings	0	0	0
Assaults	2	0	0
Commercial Burglary	0	0	0
Residential Burglary	1	0	0
Theft	17	1	0
Theft from Auto	7	0	0
Stolen Autos	6	0	0

* As of March 14, 2010

-0-

Crime Statistics for Glen Allen Only

(Number of Reports Written)

Reports Written	Jan.	Feb.
Accident	0	0
Break & Enter	0	0
Check Person, etc.	0	0
Disorderly Conduct	0	0
Domestic/Dispute	0	1
Stolen Vehicle	0	0
Theft & Theft f/ Auto	0	2
Vandalism	0	0

2010 Census Time

Now that you've received the Census form in the mail, it's important that you fill it out and promptly mail it back. Census information affects the numbers of seats our state occupies in the U.S. House of Representatives. And people from many walks of life use census data to advocate for causes, rescue disaster victims, prevent diseases, research markets, locate pools of skilled workers and more.

When you do the math, it's easy to see what an accurate count of residents can do for our community. Better infrastructure. More services. A brighter tomorrow for everyone. In fact, the information the census collects helps to determine how more than \$400 billion dollars of federal funding each year is spent on infrastructure and services like:

- Hospitals
- Job training centers
- Schools
- Senior centers
- Bridges, tunnels and other-public works projects
- Emergency services

Participation isn't just important—it's mandatory. If you don't mail the form in, someone will have to come to your home and interview you. That will cost the taxpayers (you) much more than if you had just mailed the form.

If you're worried about the security of your information, don't be. It is against the law to disclose or publish any names, addresses including GPS coordinates, Social Security numbers, or telephone numbers. Your information is used to produce statistics. Your answers cannot be used against you by any government agency or court. All Census Bureau

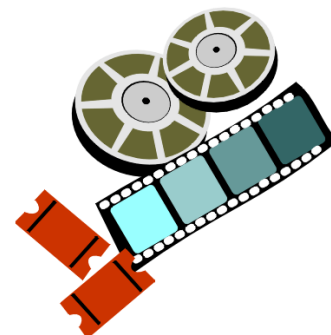
employees take the oath of nondisclosure and are sworn for life to protect the confidentiality of the data. The penalty for unlawful disclosure is a fine of up to \$250,000 or imprisonment of up to 5 years, or both.

Movie Night Help Needed

For the past several years, Gary Goldberg has provided movie nights at the common area. For the past few years the Board has piggy backed the community's Annual Meeting with a movie night in early June.

Gary is still willing to coordinate this but needs help - one person to be popcorn maker & drinks server and cleanup, and 1-2 others to haul equipment/setup the screen, run cables, lift stuff, and then reverse/clean-up afterwards. (Gary says he can't do the heavy lifting any more.) He's willing to pay \$30/person for responsible teenagers who can take direction and can commit to being there from start until "done", which is after the movie and everything is put away.

If you can help him out or have some suggestions for a good family-friendly movie, contact Gary at og@digimark.net.



Save The Date



Parks & Recreation
M-N-C-P-C
live more, play more
pparks.com

Annual Juneteenth

for a day of joyous celebration on

Juneteenth is the oldest nationally celebrated commemoration of the ending of slavery in the United States. From its Galveston, Texas origin in 1865, the observance of June 19th as the African American Emancipation Day has spread across the United States and beyond. Today Juneteenth commemorates African American freedom and emphasizes education and achievement.

www.juneteenth.com

Saturday,
June 19th
2010
12 noon-5 pm

at
Watkins Regional Park
301 Watkins Park Drive
Upper Marlboro, MD 20774

For more information, call (301) 627-2270 or (301) 218-6700. TTY (301) 218-6768.



***Glen Allen Homeowners Assoc., Inc.
c/o ProCom, Inc.
1111 Benefield Blvd., Suite 110
Millersville, MD 21108***

Dated material; please deliver by March 26th